

## ProJet™ Industrial Tank Sparger

ProJet™ Tank mount jet sparger is well suited for hot water heating applications where on demand hot water is required for industrial & utility applications.

The unique 2-stage self-modulating steam flow control design maintains high steam flow velocity through a wider range of operation. This assures complete condensation of steam in the water, for precise temperature control, stable vibration free operation, and reliable heating performance.

Can be mounted in tank side wall or top mount extending down into tank.

Steam line connection is an NPT fitting and optional steam line extensions are available.

Interchangeable steam injectors if your heating requirements should change.

Available in 4 sizes to meet you heating needs.

Simple, reliable, economical design.

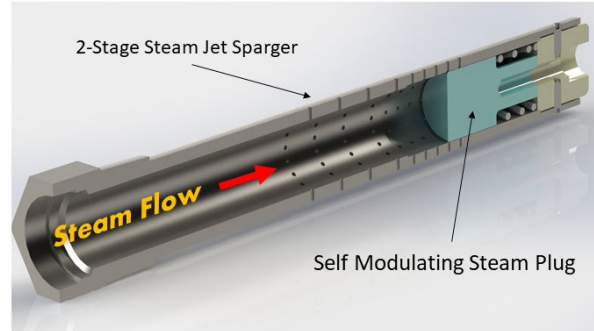


Fig. 1 – Internal View Patent Pending

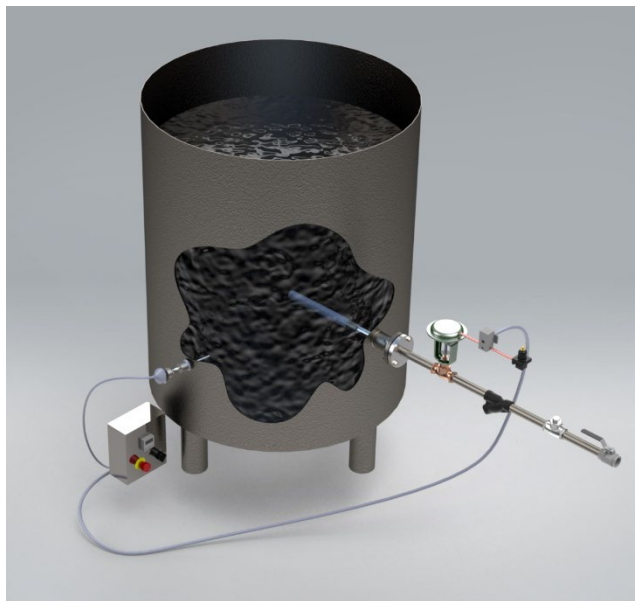


Fig. 2 – Tank Install View

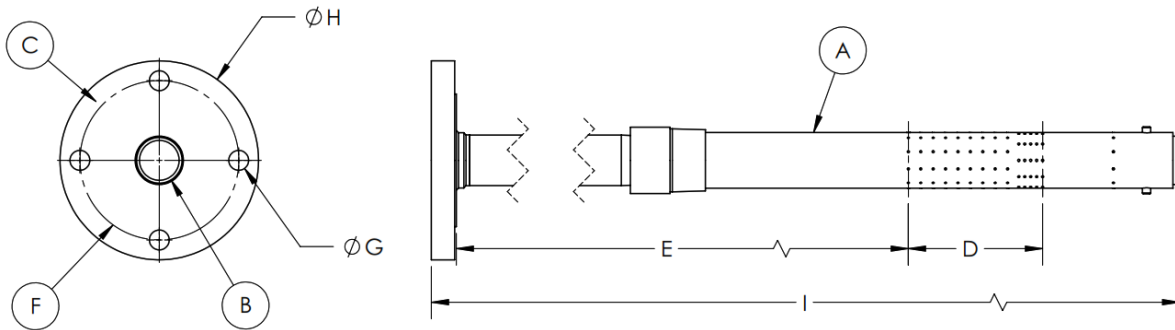
### Common Water Heating Applications

- On demand hot water
- CIP Cleaning
- Jacketed Reactor Water Heating
- Plant Sanitation Hot Water
- Vegetable & Potato Blanching water
- Boiler Feedwater Heating
- Reverse Osmosis Water Systems
- Can Topping
- Hose Station Hot Water Tank Supply
- Hot Water Tank Supply
- Meat & Poultry processing
- Centrifuge or Filter Washing
- Hot water system OEM's

| ProJet™ Steam Injector Steam Flow & Heating Capacities |                  |                      |           |                      |           |                      |           |
|--|------------------|----------------------|-----------|----------------------|-----------|----------------------|-----------|
| Injector Size  | Steam connection | Steam Flow Max (pph) | BTU/hr    | Steam Flow Max (pph) | BTU/hr    | Steam Flow Max (pph) | BTU/r     |
| Model  |                  | 150 psig             |           | 100 psig             |           | 60 psig              |           |
| G750   | 0.75"            | 2,120                | 2,100,000 | 1,550                | 1,570,000 | 1,020                | 1,080,000 |
| G1000  | 1.0"             | 3,450                | 3,500,000 | 2350                 | 2,400,000 | 1480                 | 1,500,000 |
| G1500  | 1.5"             | 5,380                | 5,450,000 | 3,900                | 3,370,000 | 2570                 | 2,600,000 |
| G2000  | 2.0"             | 8,900                | 8,900,000 | 6030                 | 6,150,000 | 3900                 | 3,900,000 |

Heating capacity of btu/hr shown is based on max steam flow shown at identified steam pressure.

The ProJet Jet Sparger is designed for water tank Mounting. Below are available options for mounting to tank flanged tee connection and extension lengths available for insertion into tank. A minimum of 12" between the tank wall and steam jet area ("D") is recommended.



| Projet Extension flanges |                 | Min Distance from flange to Injection area |                       |                             |                     |                     |                     | Flange Connections |                      |                      | Overall length      |                     |                     |
|--------------------------|-----------------|--|-----------------------|-----------------------------|---------------------|---------------------|---------------------|--------------------|----------------------|----------------------|---------------------|---------------------|---------------------|
| Model                    | ProJet Injector | Steam connection                           | Flange size Class 150 | Steam injection length (in) | 1 ft extension (in) | 2 Ft Extension (in) | 4 ft extension (in) | # of Bolts Holes   | Ø of Bolt Holes (in) | flange diameter (in) | 1 ft extension (in) | 2 ft extension (in) | 4 ft extension (in) |
|                          | A               | B  | C                     | D                           | E                   | E                   | E                   | F                  | G                    | H                    | I                   |                     |                     |
| PX75                     | G75             | 1" NPT                                     | 2.5" ANSI             | 6.4                         | 23.5                | 35.5                | 59.5                | 4                  | 0.75                 | 7.0                  | 34.5                | 46.5                | 68.5                |
| PX10                     | G10             | 1" NPT                                     | 2.5" ANSI             | 5.4                         | 21.2                | 33.2                | 57.2                | 4                  | 0.75                 | 7.0                  | 32.0                | 44.0                | 68.0                |
| PX15                     | G15             | 1.5" NPT                                   | 3" ANSI               | 5.0                         | 21.2                | 33.2                | 57.2                | 4                  | 0.75                 | 7.5                  | 33.5                | 45.5                | 69.5                |
| PX20                     | G20             | 2" NPT                                     | 4" ANSI               | 6.8                         | 21.1                | 33.1                | 57.1                | 8                  | 0.75                 | 9.0                  | 35.0                | 47.0                | 71.0                |

| Specifications – ProJet™ Industrial Inline Heater |                          |                    |
|---|--------------------------|--------------------|
| <b>Rating:</b>                                    | Psig/°F (Barg/°C)        | 150/400 (10.3/204) |
| <b>Materials of Construction:</b>                 | Steam Injector Internals | 316 SS             |
| <b>Design Standard:</b>                           |                          | ASME B31.1         |
| <b>Steam Pipe Connection:</b>                     | NPT Threaded             | ANSI B1.20.1       |
| <b>Tank Mount Connection:</b>                     | Flanged (Optional)       | ANSI B16.5         |

For more information, please contact ProSonix at 800-849-1130 or [info@psxllc.com](mailto:info@psxllc.com)