

ProJet Inline Steam Injection Water Heater

ProJet™ Inline Water Heater is designed to supply on demand hot water heating for industrial & utility applications.

The unique 2-stage self-modulating steam flow control design, maintains high steam flow velocity through a wider range of operation. This assures complete condensation of steam in the water, for precise temperature control, stable vibration free operation, and reliable heating performance.

The radial multi-port steam jet diffuser provides uniform heating of the water flow.

Self cleaning design reduce chance for scale & mineral build-up.

Energy saving using both the latent & sensible heat of the steam for 100 energy transfer.

Designed for use with external steam control modulating valve.

Interchangeable steam injectors if your heating requirements should change.



Patent Pending

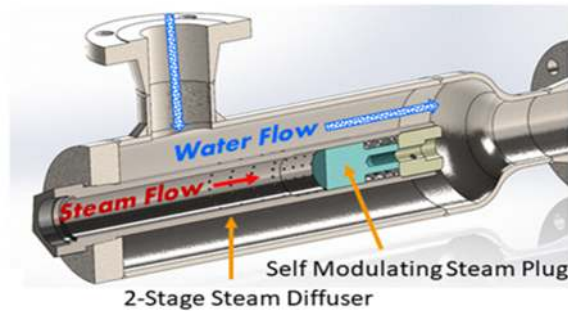


Fig. 1 – Internal View

Common Water Heating Applications ...

- On demand hot water
- CIP Cleaning
- Jacketed Kettle Water Heating
- Plant Sanitation Hot Water
- Vegetable & Potato blanching
- Boiler Feedwater Heating
- Reverse Osmosis Water Systems
- Vegetable & Fruit Can Topping
- Hose Station Hot Water Tank Supply
- Hot Water Tank Supply
- Meat & Poultry processing
- Centrifuge or Filter Washing
- Jacketed reactor heating
- Central Hot water system OEM's

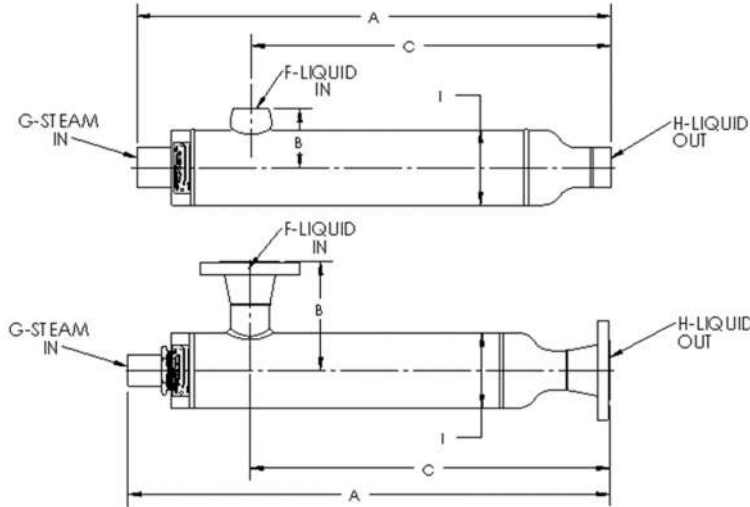
Liquid Body		Available Steam Injectors			
Water Connection Size	Max Flow (gpm)	G750	G1000	G1500	G2000
1.0"	33	Yes	Yes	---	---
1.5"	68	Yes	Yes	Yes	---
2.0"	120	Yes	Yes	Yes	Yes
3.0"	270	Yes	Yes	Yes	Yes
4.0"	485	Yes	Yes	Yes	Yes

Flowrates shown above based on water flow at 15 fps

ProJet™ Steam Injector Steam Flow & Heating Capacities							
Injector Size	Steam connection	Steam Flow Max (pph)	BTU/hr	Steam Flow Max (pph)	BTU/hr	Steam Flow Max (pph)	BTU/hr
Model		150 psig		100 psig		60 psig	
G750	0.75"	2,120	2,100,000	1,550	1,570,000	1,020	1,080,000
G1000	1.0"	3,450	3,500,000	2350	2,400,000	1480	1,500,000
G1500	1.5"	5,380	5,450,000	3,900	3,370,000	2570	2,600,000
G2000	2.0"	8,900	8,900,000	6030	6,150,000	3900	3,900,000

Heating capacity of btu/hr shown is based on max steam flow shown at identified steam pressure.

Specifications – ProJet™ Industrial Inline Heater		
Liquid Body Rating:	Psig/°F (Barg/°C)	150/450 (10.3/232)
Materials of Construction:	Liquid Body – Carbon Steel	ASTM A105, A106, A516
	Liquid Body – Stainless	ASTM A312, A240, A182
Materials of Construction:	Steam Injector Internals	316 SS
Design Standard:		ASME B31.1
Connection Rating:	NPT Threaded	ANSI B1.20.1
Connections Rating:	Flanged	ANSI B16.5



ProJet™ Heater Dimensions & Weights								
Model	Dimensions				Connections			Weight Lbs/Kg
	A	B	C	I	F	G	H	
G7510	26	2.8	19	3.5"	1.0" NPT	¾" NPT	1.0" NPT	21 lb (9.5 kg)
G7515	26"	2.8	18	3.5"	1.5" NPT	¾" NPT	1.5" NPT	22 lb (9.9 kg)
G7520	28.9"	6.5"	21.6"	4.5"	2.0" RFF	¾" NPT	2.0" RFF	42 lb (19 kg)
G7525	28.9	6.8"	21.6"	4.5"	2.5" RFF	¾" NPT	2.5" RFF	49 lb (22 kg)
G7530	31"	7.8"	24"	6.6"	3.0" RFF	¾" NPT	3.0" RFF	79 lb (36 kg)
G7540	31.3"	8.0"	24.3"	6.6"	4.0" RFF	¾" NPT	4.0" RFF	89 lb (41 kg)
G1010	25.6"	2.9"	18.9	3.5"	1.0" NPT	1.0" NPT	1.0" NPT	22 lb (9.9 kg)
G1015	26"	2.8	18	3.5"	1.5" NPT	1.0" NPT	1.5" NPT	24 lb (11 kg)
G1020	28.7"	6.5"	21.6"	4.5"	2.0" RFF	1.0" NPT	2.0" RFF	43 lb (20 kg)
G1025	28.7"	6.8"	21.6"	4.5"	2.5" RFF	1.0" NPT	2.5" RFF	49 lb (22 kg)
G1030	31"	7.8"	24"	6.6"	3.0" RFF	1.0" NPT	3.0" RFF	80 lb (36 kg)
G1040	31.3"	8.0"	24.3"	6.6"	4.0" RFF	1.0" NPT	4.0" RFF	90 lb (41 kg)
G1515	28"	3.3"	21.6	4.5"	1.5" NPT	1.5" NPT	1.5" NPT	36 lb (16 kg)
G1520	28"	6.5"	21.6	4.5"	2.0" RFF	1.5" NPT	2.0" RFF	46 lb (21 kg)
G1525	28"	6.8"	21.6	4.5"	2.5" RFF	1.5" NPT	2.5" RFF	54 lb (24 kg)
G1530	31"	7.8"	24"	6.6"	3.0" RFF	1.5" NPT	3.0" RFF	87 lb (39 kg)
G1540	32"	8"	24"	6.6"	4.0" RFF	1.5" NPT	4.0" RFF	97 lb (44 kg)
G2020	31"	7.5"	24"	6.6"	2.0" RFF	2.0" NPT	2.0" RFF	80 lb (36 kg)
G2025	31"	7.8"	24"	6.6"	2.5" RFF	2.0" NPT	2.5" RFF	89 lb (40 kg)
G2030	31"	7.8"	24"	6.6"	3.0" RFF	2.0" NPT	3.0" RFF	92 lb (42 kg)
G2040	32"	8"	24"	6.6"	4.0" RFF	2.0" NPT	4.0" RFF	102 lb (46kg)

Note – Dimensions are for estimating and will be confirmed at time of order.

For more information, please contact ProSonix at 800-849-1130 or info@psxllc.com