

## ProJet™ Industrial Tank Sparger

ProJet™ Tank mount jet sparger is well suited for hot water heating applications where on demand hot water is required for industrial & utility applications.

The unique 2-stage self-modulating steam flow control design maintains high steam flow velocity through a wider range of operation. This assures complete condensation of steam in the water, for precise temperature control, stable vibration free operation, and reliable heating performance.

- Can be mounted in tank side wall or top mount extending down into tank.
- Steam line connection is an NPT fitting and optional steam line extensions are available.
- Interchangeable steam injectors if your heating requirements should change.
- Available in 4 sizes to meet your heating needs.
- Simple, reliable, economical design.

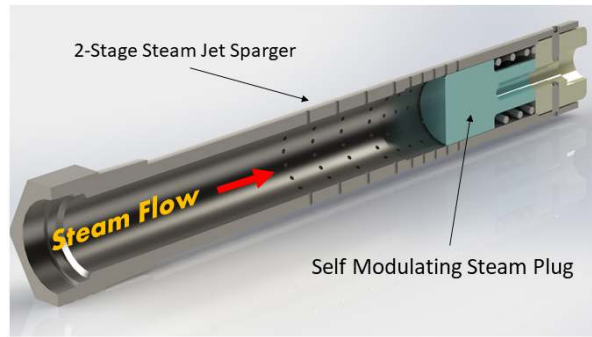


Fig. 1 – Internal View Patent Pending

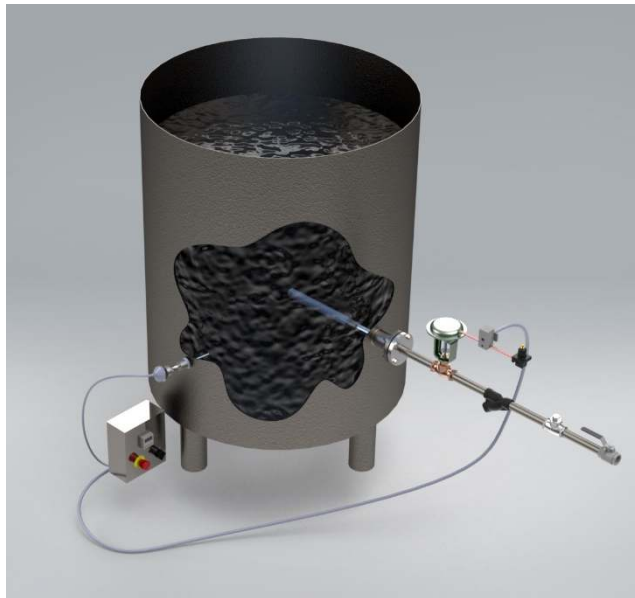


Fig. 2 – Tank Install View

### Common Water Heating Applications

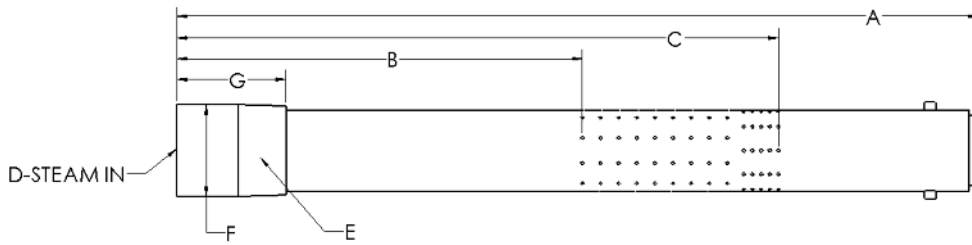
- On demand hot water
- CIP Cleaning
- Jacketed Reactor Water Heating
- Plant Sanitation Hot Water
- Vegetable & Potato Blanching water
- Boiler Feedwater Heating
- Reverse Osmosis Water Systems
- Can Topping
- Hose Station Hot Water Tank Supply
- Hot Water Tank Supply
- Meat & Poultry processing
- Centrifuge or Filter Washing
- Hot water system OEM's

Specifications – ProJet™ Industrial Inline Heater		
<b>Rating:</b>	Psig/°F (Barg/°C)	150/400 (10.3/204)
<b>Materials of Construction:</b>	Steam Injector Internals	316 SS
<b>Design Standard:</b>		ASME B31.1
<b>Steam Pipe Connection:</b>	NPT Threaded	ANSI B1.20.1
<b>Tank Mount Connection:</b>	Flanged (Optional)	ANSI B16.5

ProJet™ Steam Injector Steam Flow & Heating Capacities							
Injector Size	Steam connection	Steam Flow Max (pph)	BTU/hr	Steam Flow Max (pph)	BTU/hr	Steam Flow Max (pph)	BTU/r
Model		150 psig		100 psig		60 psig	
<b>G750</b>	0.75"	2,120	2,100,000	1,550	1,570,000	1,020	1,080,000
<b>G1000</b>	1.0"	3,450	3,500,000	2350	2,400,000	1480	1,500,000
<b>G1500</b>	1.5"	5,380	5,450,000	3,900	3,370,000	2570	2,600,000
<b>G2000</b>	2.0"	8,900	8,900,000	6030	6,150,000	3900	3,900,000

Heating capacity of btu/hr shown is based on max steam flow shown at identified steam pressure.

### Projet Injector Dimensions



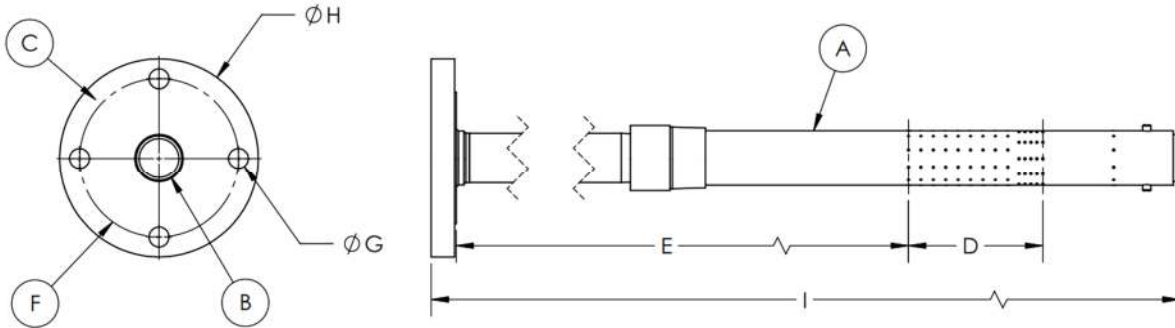
Projet Jet Sparger Dimensions						
MODEL	A	B	C	D (STEAM)	F	G
<b>GS750</b>	19.8" [503mm]	10.2" [259mm]	16.1" [409mm]	¾" NPT	2.5" [63mm]	2.6" [66mm]
<b>GS1000</b>	19.4" [493mm]	9.5" [241mm]	15.0" [381mm]	1" NPT	1.9" [48mm]	2.6" [66mm]
<b>GS1500</b>	20.8" [528mm]	10.5" [266mm]	15.8" [401mm]	1.5" NPT	2.4" [61mm]	2.8" [71mm]
<b>GS2000</b>	22.3" [566mm]	9.4" [231mm]	16.3" [414mm]	2" NPT	2.9" [73mm]	3.0" [76mm]

Notes:  
1. Injector connects to threaded steam line via "D" female style connection.



**ProJet injector with optional tank extension**

The ProJet Jet Sparger is designed for water tank Mounting. Below are available options for mounting to tank flanged tee connection and extension lengths available for insertion into tank. A minimum of 12" between the tank wall and steam jet area ("D") is recommended.



ProJet Extension flanges			Min Distance from flange to Injection area					Flange Connections			Overall length		
Model	ProJet Injector	Steam connection	Flange size Class 150	Steam injection length (in)	1 ft extension (in)	2 Ft Extension (in)	4 ft extension (in)	# of Bolts Holes	Ø of Bolt Holes (in)	flange diameter (in)	1 ft extension (in)	2 ft extension (in)	4 ft extension (in)
	A	B	C	D	E	E	E	F	G	H	I		
PX75	G75	1" NPT	2.5" ANSI	6.4	23.5	35.5	59.5	4	0.75	7.0	34.5	46.5	68.5
PX10	G10	1" NPT	2.5" ANSI	5.4	21.2	33.2	57.2	4	0.75	7.0	32.0	44.0	68.0
PX15	G15	1.5" NPT	3" ANSI	5.0	21.2	33.2	57.2	4	0.75	7.5	33.5	45.5	69.5
PX20	G20	2" NPT	4" ANSI	6.8	21.1	33.1	57.1	8	0.75	9.0	35.0	47.0	71.0

For more information, please contact ProSonix at 800-849-1130 or [info@psxllc.com](mailto:info@psxllc.com)